

**AETEK**



**2 Lanes at night**

## ***Camera Housing for ANPR Solution***



***\* What Makes LPC CMOS camera Unique***

- View of Image***
- Captured Lanes***
- Headlight Filter***

***\* How assembling a LPC Camera***

- Your Box Camera + AETEK LPC camera Housing***
- Cooperate with LPR S/W Partner***
- Recommended ANPR installation***

***\* Product Comparison***



*What makes LPC Camera Unique*

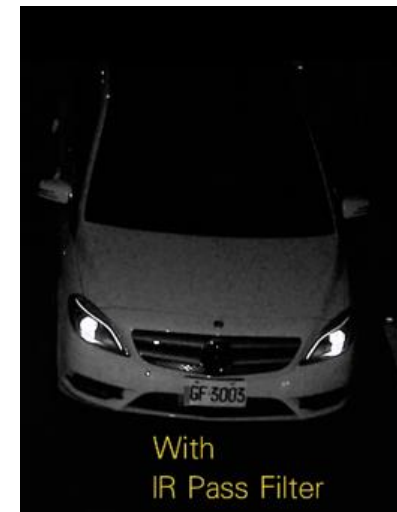
# What Makes LPC CMOS camera Unique



- Two Lanes Captured day & night by  $\geq$  2MP COMS Camera
- Color Scene overview during day time for general surveillance
- Color ANPR view for license plate capture during day time
- B/W ANPR view for license plate capture at night



- Car head light filter
- Eliminating the impact of environmental lights





## *How assembling a LPC Camera*

**LPC** (License Plate **C**apture) camera H/W

**LPR** (License Plate **R**ecognition) S/W Partner

**ANPR** solution (**A**utomatic **N**umber **P**late **R**ecognition)



## How assembling a LPC Camera for

Outdoor parking lot  
Min Exp: 1/480 sec.

Max.  
40 km/hr



- Street
- Min Exp: 1/1000 sec.

Max.  
96 km/hr

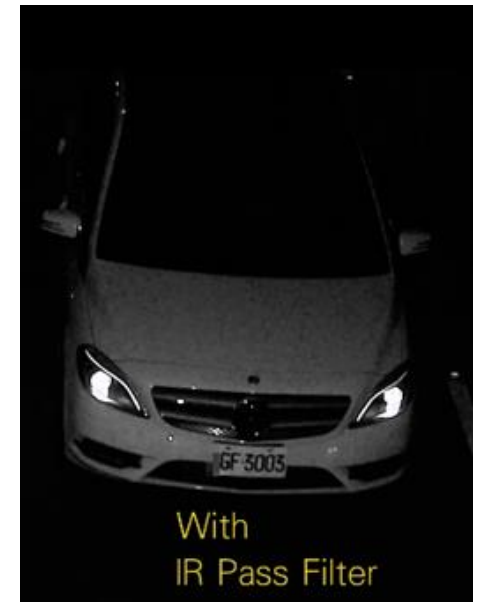
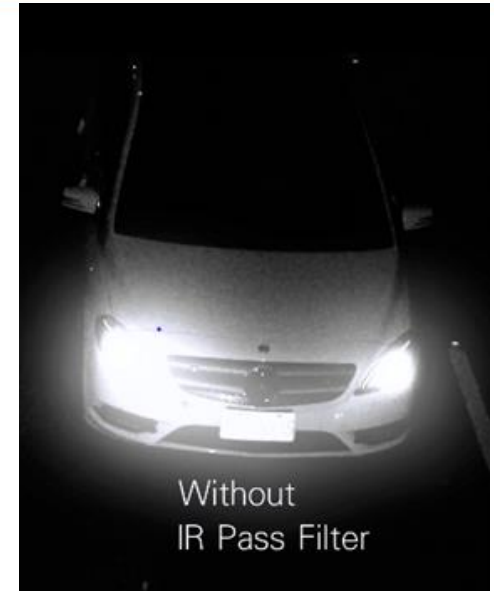


## 1<sup>st</sup> Phase- choose a proper box camera



\* Adding IR pass filter between Lens & sensor

Box Camera	Specification
Max speed.	Street: 60MPH (96km/h)
Shutter Time	Street: 1/800 to 1/10,000 sec
Max. Frame Rate	>= 1080P, 60FPS
Camera Housing w/IR illuminator	48W
IR angle	Adjustable VAIR 20°~40°
Capture Range	Up to 20 m
Capture Lanes	2 Lanes
Lens	12-40mm, P-iris or 8-80mm, DC-iris (optional)
Input power (Camera Housing)	95W PoE or AC24V



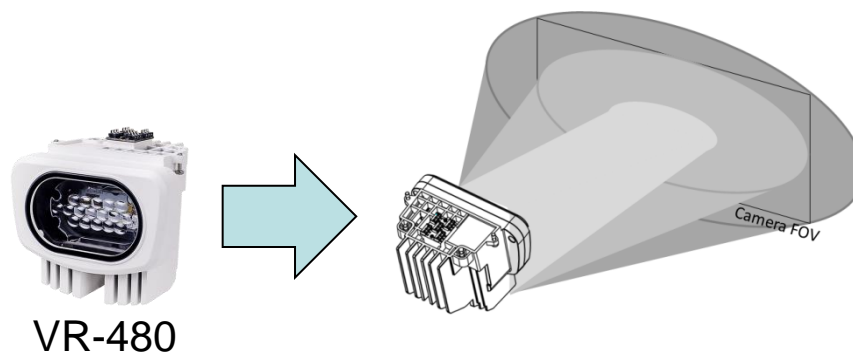
## 2<sup>nd</sup> Phase- choose proper Camera Housing & IR Illuminator



Choose AETEK's **P20** series of camera housing (AC24V input) or **P60** series of camera housing (95W PoE input)

Choose AETEK's VR-480 48W **VAIR** illuminator

**VAIR** technology is an optical technology to adjust illuminator beam angle by manual dip switch or remote control thru RS485 by Pelco-D command to fit camera FOV.









# 24VAC Power Box for P20 series of Camera Housing

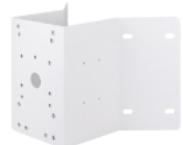


PB-024 -2AC

<b>Weather rating</b>	IP67
<b>Operating temperature</b>	-40°C ~ 60°C
<b>Vandal proof</b>	IK10
<b>Fit converter &amp; surge protector</b>	Yes
<b>Power input</b>	100 – 240 VAC
<b>Power output</b>	24 VAC, 6A
<b>Optional inside optic fiber converter</b>	Yes

### Adapter

Pole Mount Adapter	
 AT-100 Pole mount Adapter	 AT-101 Pole mount Adapter

Corner Mount Adapter
 AT-200 Corner mount Adapter

# P20 applied onto ANPR thru 24VAC power input



Range = Up to 20M  
Dual Lanes



Max. Speed = 96 km/h





**I49-100  
Outdoor 95W  
PoE Injector Box**

<b>Gigabit Ethernet 10/100/1000 Mbps</b>	V
<b>95W PoE</b>	V
<b>Operating Temperature</b>	-40°C~ 60°C (-40°F~ 140°F)
<b>IP67/IK10</b>	V
<b>AC Surge Protection</b>	10KV
<b>PoE Surge Protection</b>	6KV

## Adapter

Pole Mount Adapter	
<p>AT-100 Pole mount Adapter</p>	<p>AT-101 Pole mount Adapter</p>

Corner Mount Adapter
<p>AT-200 Corner mount Adapter</p>

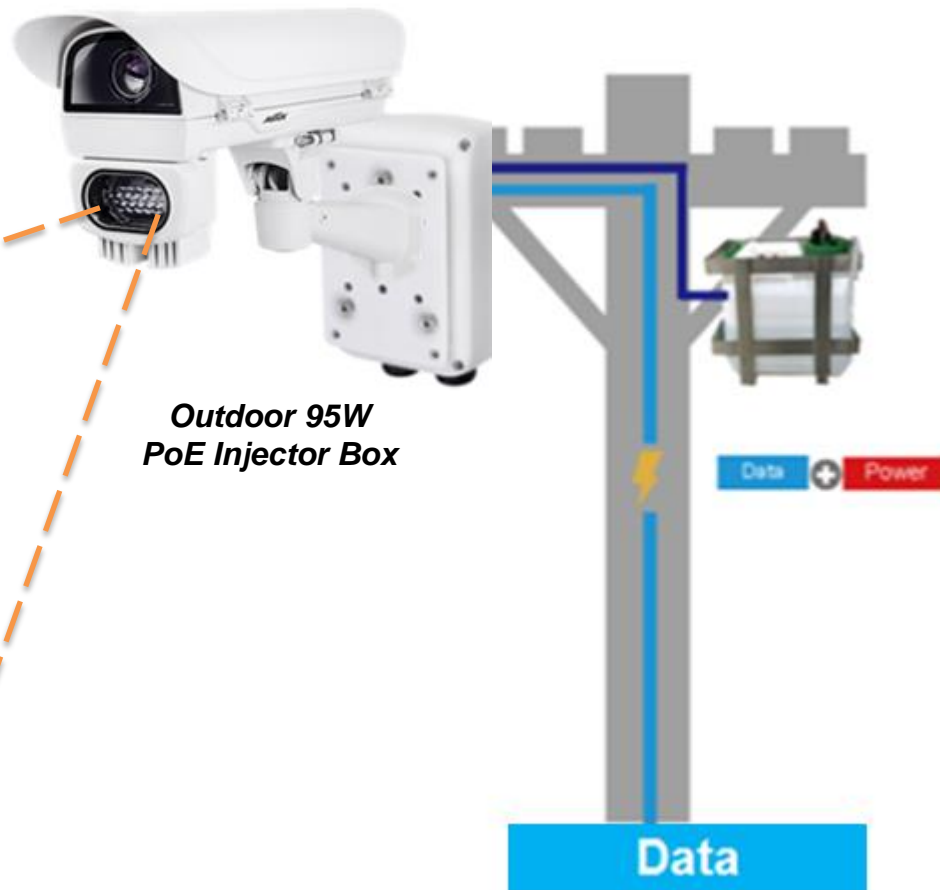
# P60 applied onto ANPR thru 95W PoE input



Range up to 20M  
Covering Dual Lanes



Max. Speed = 96 km/h

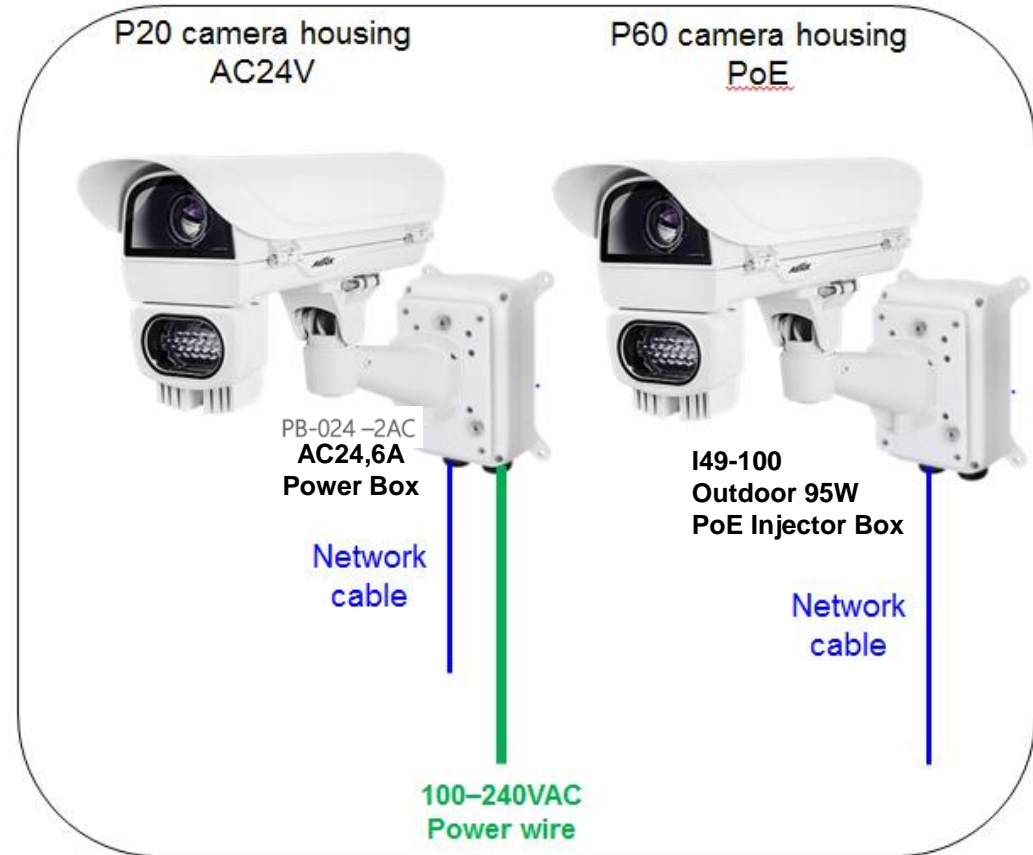


# Complete LPC Camera kit



Model	Your box camera + AETEK P20 camera Housing	Your box camera + AETEK P60 camera Housing
Max speed.	Street: 96km/h	
Shutter Time	Street: 1/800 to 1/10,000 sec	
Max. Frame Rate	1080P, 60FPS	
IR illuminator	48W	
IR angle	Adjustable VAIR 20°~40°	
Capture Range	Up to 20 m	
Capture Lanes	2 Lanes	
Lens	12-40mm, P-iris or 8-80mm, DC-iris (optional)	
Housing	IP67, IK10	
Input power	<b>6A,AC24V</b>	<b>95W PoE</b>
Cable in	<b>One AC cable, one network cable</b>	<b>One network cable only</b>

# Advantage using AETEK P20/P60 Camera Housing

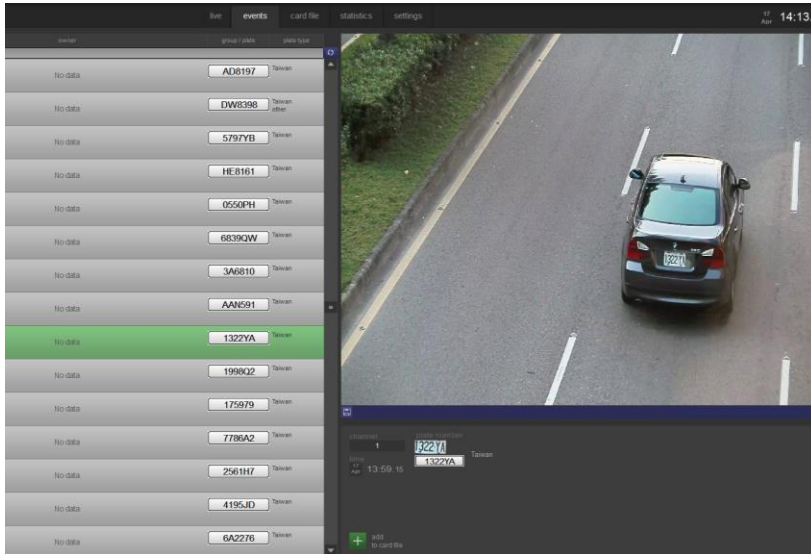


- Without exposing power wire to illuminator
- two ways to adjust **VAIR** illuminator beam angle
  1. manual adjustment illuminator beam angle to 10°/20°/30°/40°
  2. remote adjustment illuminator beam angle to proper position by Pelco-D command thru
- Without exposing RS485, DI, DO cables between illuminator and camera



## 3<sup>rd</sup> Phase- Cooperate with LPR S/W partner

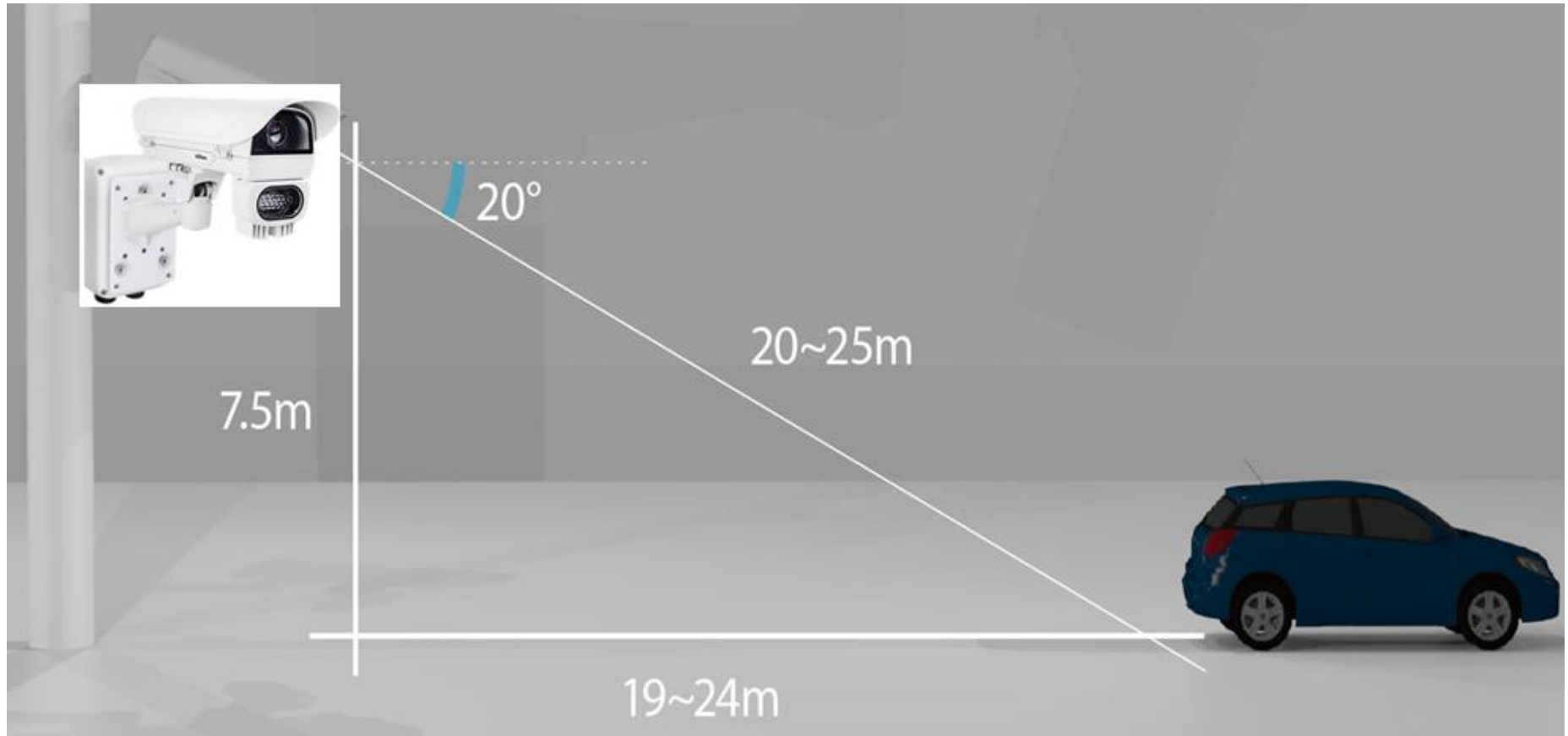
LPR(License Plate Recognition) S/W Partners are delight to cooperate with LPC(License Plate Capture) camera suppliers to provide total ANPR(Automatic Number Plate Recognition) solution.



## Integrated 3rd party LPR/ ALPR Software Partners



# Recommended ANPR Installation





## *Product Comparison*

- **Two cameras** to provide scene overview and capture license plate respectively like DINION Capture 5000 / 7000



- General CCD LPC cameras only catch **one lane**





***Thank you***  
*for your attention*