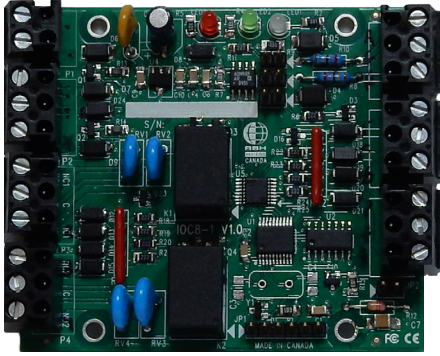


# Integra







The IO8 Input/ Output Controller is part of the Integra line of access control products from RBH. Its powerful design features, address present and future access and security management needs with ease and efficiency.

## Features:

- Multiple levels of input supervision:  
All input points can be individually configured for one of the seven levels of supervision, ranging from no supervision to maximum security, dual resistor supervision.
- RS485 Connectivity:  
Allows flexible and reliable field deployment up to 4,000 Ft and is fully supervised for online/offline communications for complete security.
- The IOC8 is designed to exceed all UL / CE / FCC standards for a reliable and robust expansion module. It employs the latest in electronic fuse circuit design for the ultimate circuit protection fused at 1 AMP.
- The IOC8 is designed with ultra-low power consumption for maximum efficiency and reduced carbon footprint.
- Built-in lightning protection
- Plug-in terminal connectors
- Silk screened terminal legend
- Built-in cabinet tamper

## IOC8 Input/Output Controller

Power Requirement	12 VDC		
Current Consumption	30 MA		
Fuses	Resettable Fuse		
Configuration	8 Inputs/ 2 Outputs	4 Inputs/ 4 Outputs	
Inputs	8 Programmable supervised inputs	4 Programmable supervised inputs	
Outputs	2-100 MA open collector	2-100 MA open collector	
		2-5 AMP @30 VDC form C relays	
Tamper	Normally Closed Tamper		
Communications	RS485 Communications supervised		
Cable	2 pair 22g shielded		
Cable Distance	1000 ft. (305m)		
LED Indications	Power LED	RX Communications LED	TX Communications LED
Dimension	2.625" W x 3.0" H x 0.625" D		
Operating Temperature	0-70° C (35-150° F)		
Operating Humidity	20-80% RH (non-condensing)		
Standards	    *Pending		

\*Specifications are subject to change without notice.



[WWW.RBH-ACCESS.COM](http://WWW.RBH-ACCESS.COM)

© RBH Access Technologies, Inc. 2016