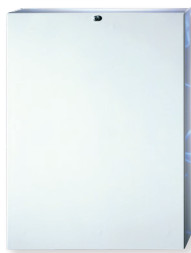




Control Panels

A complete range of commercial grade, expandable, communicating control panels featuring integration compatibility with leading access control, CCTV, home automation and managed alarm-signaling providers.

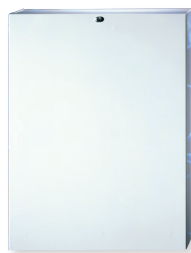
Each Premier Elite control panel shares the same programming platform and peripheral devices, ensuring instant product familiarity across the range.



Premier Elite 24 (Metal)

Control panel expandable to 24 zones

- 8 Wired zones onboard
- 2 Areas
- 25 User Codes
- Compatible with all LCD keypads and Premier Elite communicators
- PD6662: 2010, EN50131-3, Grade 3 Class II



Premier Elite 48 (Metal)

Control panel expandable to 48 zones

- 8 Wired zones onboard
- 4 Areas
- 50 User Codes
- Compatible with all LCD keypads and Premier Elite communicators
- PD6662: 2010, EN50131-3, Grade 3 Class II



Premier Elite 88 (Metal)

Control panel expandable to 88 zones

- 8 Wired zones onboard
- 8 Areas
- 100 User Codes
- Compatible with all LCD keypads and Premier Elite communicators
- PD6662: 2010, EN50131-3, Grade 3 Class II



Premier Elite 168 (Metal)

Control panel expandable to 168 zones

- 8 Wired zones onboard
- 16 Areas
- 200 User Codes
- Compatible with all LCD keypads and Premier Elite communicators
- PD6662: 2010, EN50131-3, Grade 3 Class II



Premier Elite 640 (Metal)

Control panel expandable to 640 zones

- 64 Areas
- 500 User Codes
- Compatible with all LCD keypads and Premier Elite communicators
- PD6662: 2010, EN50131-3, Grade 3 Class II



Expanders



Premier Elite 8XP

8 zone expander

- 8 Additional Outputs
- 1 Auxiliary Input
- Speaker Driver



Premier Elite 60iXD

Expansion module

- 60 Additional Zones
- Remote Wired
- Plug-On (Local mode & Network mode)
- Expansion module providing two iD loops each supporting 30 iD biscuits.



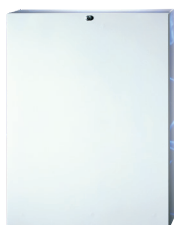
Premier Elite RM8

Relay module

- 8 Relay Outputs
- Remote Wired
- Plug-On - Premier Elite Series Only (except Premier Elite 24 & Premier Elite 48-W)



Power Supplies



Premier Elite PSU200XP

Switch mode power supply

- Energy efficient 2.5A switch mode power supply with Premier Elite 8XP expander
- Full monitoring & Diagnostics with Premier Elite Control Panels
- Grade 3, Class II



Premier Elite PSU200

Switch mode power supply

- Energy efficient 2.5A switch mode power supply
- Grade 3, Class II



Texecom products are designed and manufactured in the UK

www.texecom
intsales@texecom



LCD Keypads



Premier Elite SMK/FMK

Large LCD screen keypad with prox

- Surface/Flush mount options
- 6 Metal finish options
- 2 Additional zones
- 1 Programmable output onboard
- Built-in proximity tag reader



Premier Elite LCDLP

Large LCD screen keypad with prox

- 2 Additional zones
- 1 Programmable output onboard
- Built-in proximity tag reader



Premier LCD/LCDP

LCD screen keypad (prox optional)

- 2 Additional zones
- 1 Programmable output onboard



Premier LCDL/LCDLP

Large LCD screen keypad (prox optional)

- 2 Additional zones
- 1 Programmable output onboard



Anti-Masking Detectors



Premier Elite AMQD

Anti-masking digital quad PIR

- 15m volumetric range
- Active IR anti-masking
- Triple End-of-Line (T-EOL) signalling
- Wall tamper detection



Premier Elite AMDT

Anti-masking dual technology PIR

- 15m volumetric range
- Microwave detection
- Active IR anti-masking
- Triple End-of-Line (T-EOL) signalling
- Wall tamper detection



Premier Elite AM360 QD

Anti-masking digital quad PIR

- 9.3m diameter range
- Omni-directional quad element pyro
- Active IR anti-masking
- Triple End-of-Line (T-EOL) signalling
- Ceiling tamper detection



Premier Elite AM360 DT

Anti-masking dual technology PIR

- 9.3m diameter range
- Omni directional quad element pyro
- Adjustable K-band microwave detection
- Active IR anti-masking
- Triple End-of-Line (T-EOL) signalling
- Ceiling tamper detection

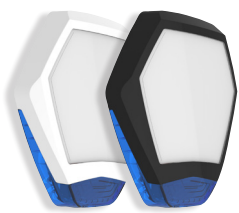
Odyssey X External Sounders - Covers



Odyssey X1 Cover

Vertically mounting external sounder

- White or black frame option
- Lens colour options: blue, red, white & green
- Integral backlight compatibility
- Photo quality graphic insert compatibility



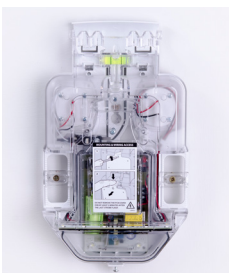
Odyssey X3 Cover

Hexagonal external sounder

- White or black frame option
- Lens colour options: blue, red, white & green
- Integral backlight compatibility
- Photo quality graphic insert compatibility



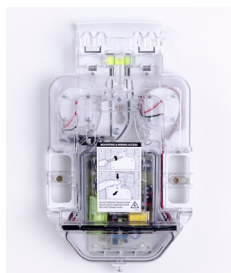
Odyssey X External Sounders - Backplates



Odyssey X-B

Grade 3 sounder with integral backlight

- 115dB (A) twin piezo sounder
- Wall & cover tamper
- Patented engineer hold-off mode
- Battery monitoring with fault output
- Alternating white LED indication
- Grade 3 Class IV



Odyssey X

Grade 3 sounder

- 115dB (A) twin piezo sounder
- Wall & cover tamper
- Patented engineer hold-off mode
- Battery monitoring with fault output
- Alternating white LED indication
- Grade 3 Class IV