

Key Features:

- Up to EI120 Minutes Fire Rated in Partitions
- Up to EI240 Minutes Fire Rated in Blockwork
- CE Marked
- Acoustic, Thermal and Vapour seal



TENMAT's FIREFLY 109 CE Marked Pipe Fire Sleeves typically provide 2 Hours', and in certain applications up to 4 Hours' Fire Resistance* to various plastic and metal pipes.

The Fire Sleeves have been fire tested to EN 1366-3:2009 & BS 476. The European Technical Approval (ETA-12/0332) and EC Certificate 1224-CPR-0341 enables the range to be CE Marked and used throughout the EU. The EN fire testing included pipes tested with Uncapped/ Uncapped (U/U) pipe end configuration as required for ventilated systems. (*FF109+ version only*)

The *FIREFLY 109* Pipe Fire Sleeves are particularly suitable for use in plasterboard partitions, but can be used in blockwork walls and floors.

The Sleeves do not require any additional metal sleeving. The unique intumescent material is vacuum formed to shape which ensures controlled sealing of the plastic pipe.

Product Dimensions

Internal Diameters Available			
17 mm	48 mm	80 mm	127 mm
21 mm	54 mm	89 mm	140 mm
27 mm	60 mm	102 mm	159 mm
34 mm	67 mm	108 mm	169 mm
42 mm	76 mm	114 mm	

- Sleeves are supplied 300 mm long as standard
- Shorter lengths may be available on request
- Nominal wall thickness—30 mm

Examples of Approved Applications

Independently Third Party Assessed:

30 Minute Partitions

- Single Board from 72mm upwards

60 Minute Partitions

- Single & Double Board Systems
- Single Layer Ablative Coated Fire Batt

120 Minute Partitions

- Double Board Systems
- Double Layer Ablative Coated Fire Batt

CE Mark Approved:

3rd Party Assessed and Audited

BS 476 and BS EN 1366-3 Fire Tested

Including Uncapped/ Uncapped testing
(*only FF109+ version tested U/U*)

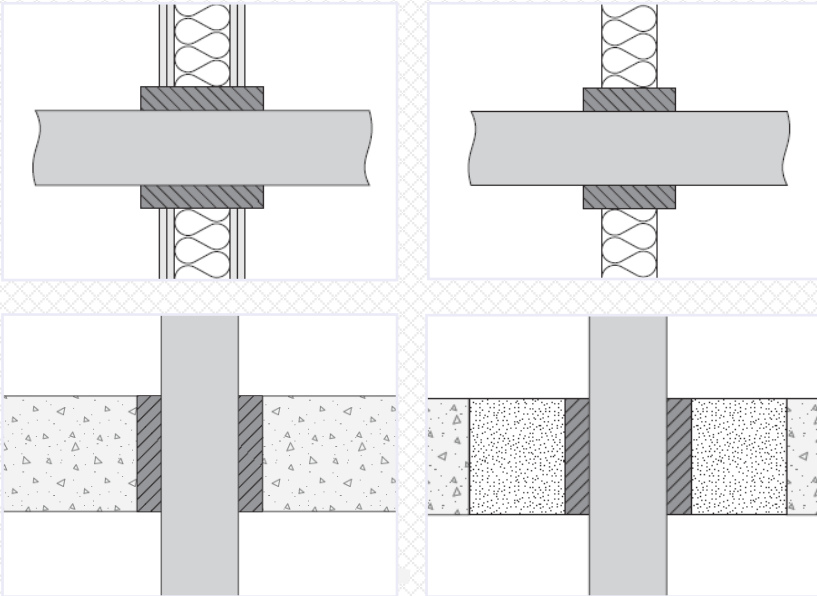
Fire Tested & Assessed for Blockwork

Up to 4 Hour Tested*

Example Approved Applications

For details of further applications please contact **TENMAT**.

TENMAT's Pipe Fire Sleeve is approved for a wide range of applications, outlined on page 3. All details for approved applications can be seen in the ETA, fire test and assessment reports which are available to download from our website.



Wall Penetrations:

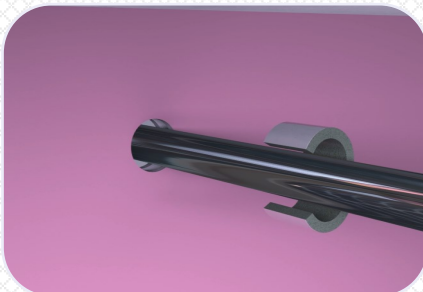
- Plasterboard (Approved with or without cavity insulation)
- Concrete/Masonry Wall
- Ablative Coated Fire Batt

Floor Penetrations:

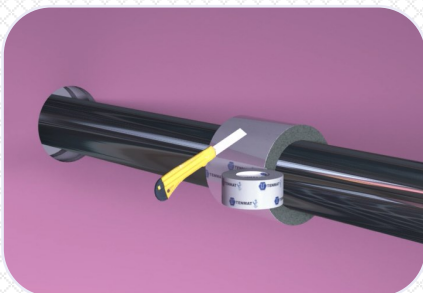
- Concrete floor
- Concrete floor with Firestop Compound

General Fitting Instructions

For detailed fitting instructions for various applications please contact **TENMAT**.



- Use the Fire Sleeve as a template when cutting the partition to provide a snug fit around the Fire Sleeve
- Cut sleeve to length if required
- Make a slit along sleeve length to allow fitting around pre-installed pipes



- Fit sleeve around pipe
- Slit should be resealed with Aluminium Foil Repair Tape provided
- Slide Fire Sleeve until required minimum protrusion either side of partition is obtained (see below)



- The Fire Sleeve must protrude each side of the partition by 25mm minimum for combustible pipes.
- Plasterboard should be a snug fit, however any gaps (up to 5 mm) should be sealed with intumescent sealant

TENMAT Limited, Ashburton Road West, Trafford Park, Manchester, M17 1TD, United Kingdom

Tel: +44 (0) 161 872 2181 - Fax: +44 (0) 161 872 7596 - E-Mail: info@tenmat.com - Web: www.tenmat.com

