

Key Features:

- For use in up to 25mm cavities
- Weather Proof/Age Tested
- 120 min Fire Rated in non-combustible constructions
- 30 min Fire Rated in Timber Frame



TENMAT's FF102/25 Ventilated Fire Barrier is a high expansion intumescent seal offering industry leading performance as a ventilated cavity fire barrier. The product has undergone extensive fire testing and is suitable for use within the majority of construction types, enabling the versatile system to be specified with confidence and provide the installer with a simple, time saving and site friendly solution.

The FF102/25 Ventilated Fire Barrier is a rigid, high expansion intumescent strip encased in aluminum foil, and can be mechanically fixed both horizontally and vertically within ventilated cavities behind rain-screen or cladding systems to act as a cavity fire barrier.

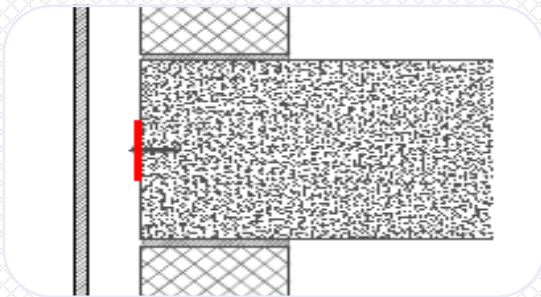
Product Dimensions

4 mm x 35 mm x 1000 mm



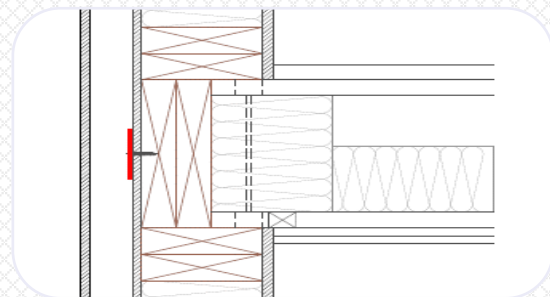
Approved Applications

FF102/25 Fixed to Non-Combustible Constructions



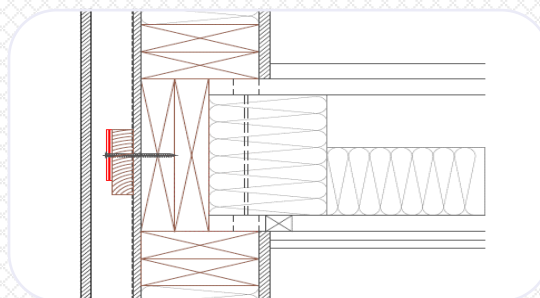
VFB Ref.	Assessed Construction Type	Fire Rating Horizontal	Fire Rating Vertical
FF102/25	Masonry / Concrete	120	120

FF102/25 Fixed to Combustible Timber Constructions



VFB Ref.	Assessed Construction Type	Fire Rating Horizontal	Fire Rating Vertical
FF102/25	Timber Frame	30	60

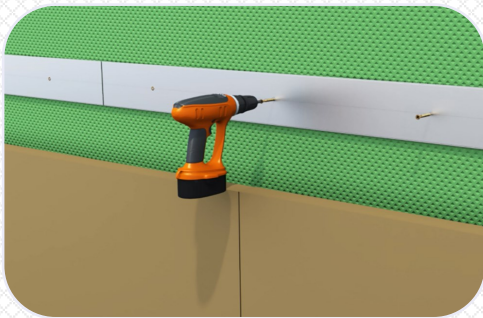
FF102/25 Fixed to Timber Batten



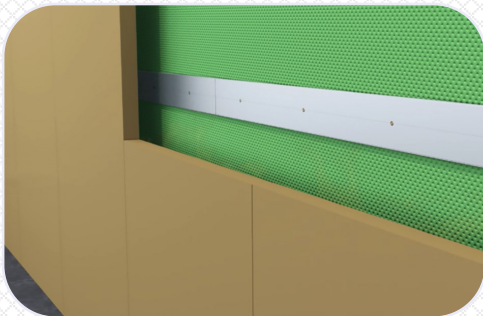
VFB Ref.	Assessed Construction Type	Fire Rating Horizontal	Fire Rating Vertical
FF102/50	Timber Batten on T. Frame	30	60

Fitting Instructions

TENMAT's FF102/25 Ventilated Fire Barrier is a particularly versatile and extensively fire tested Ventilated Fire Barrier which can be installed in a wide range of construction types. The product is simply mechanically fixed in position to leave up to a maximum 0.827" / 21mm air gap. Check with **TENMAT** if a greater air gap is required.



- Fix FF102/25 with non-combustible stainless steel nails or screws.
- Maximum screw head diameter is 0.45" / 11.5mm (trumpet/countersunk type head only).
- Product must be fixed at maximum 10" / 250mm centres.



- If the product is cut to length, ensure minimum two fixing per cut length.
- Fixings must be along center line of the Fire Barrier.
- Ensure label side is facing out into cavity.
- Adjacent lengths must be tightly butted.



- Maximum remaining air gap to the back of the cladding panel is 0.827" / 21mm.
- Ensure Fire Barrier is free to expand in a fire situation.