



## Features

- Full HD IP Mega-pixel TDN Weatherproof IR Camera
- 1/3" Progressive CMOS Sensor
- Max. Full HD(1920x1080) Real time Video
- Built-in Vari-focal Lens (f=3~10mm, F1.2)
- TDN(ICR), DSS, WDR
- Built-in IR LEDs (36 EA)
- 2.0 Mega-Pixel Resolution up to 30 Frames/sec
- Ultimate High Resolution 1100TV Lines
- Dual Stream H.264/MJPEG
- Support Two-way Audio (ADPCM)
- Support SD/SDHC Card Local Storage for Event
- IP66
- Built-in Heater
- Ethernet 10/100 Base-T (PoE)
- 24VAC/12DC Dual Voltage

## XNET Main Feature



### Full HD (2.0 MEGA Pixel) Image

XNET IP products provide real time streaming at 1080P (1920 x 1080) Full HD resolution and 720P even Different HD resolution over IP.

Much bigger resolution image provides several Cropped streaming image by digital zoom.



### Progressive Scan and De-interlaced Image Processing Technology

XNET progressive scan type IP cameras provide much higher quality for clear monitoring than interlaced scan type.



### Dynamic Dual Stream

XNET IP products provide triple codec with selectable dual streaming for multi-clients. High quality of H.264 and MJPEG both video streaming can be provided to the multi clients simultaneously.



### Multiple Event Trigger

XNET IP products series includes a physical type alarm & sensor event functions and logical event type to define event setting on screen display or integrate any kind of event action easily on the network environment.



### Storage Over IP

To avoid unpredictable network disconnection or lagging, XNET IP products provide local storages from a primary internal flash memory type to an removable SD card type memory to store JPEG image with main H.264 and MJPEG streaming via network simultaneously.





**Built-in PoE (Power over Ethernet - Standard IEEE 802.3af)**

The built-in PoE feature provides much easier connection and installation with cost saving on network environment also efficient maintenance. XNET IP products are standard IEEE 802.3af supported.

**\*) Xpeed IP & Waterproof IP using with High PoE (IEEE 802.3af)**

**XNET Applications**



**Plug & Easy Play over IP**

XNET supports plug and play with wizard installer. Auto system configuration and easily user setup by XNET applications.

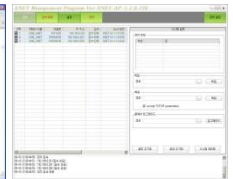
- Simple installation for network and systems setup
- Simultaneous system setup
- Support UPnP, Bonjour for easy installation



**Web Viewer**



**Setup page**



**IP Installer**



**CNB CMS software**

CNB CMS is compatible with all of CNB digital surveillance video products from HDx DVR series to XNET IP products for flexible and efficient surveillance monitoring environment CCTV system.

**Main Features**

- Max. 128Channel \*)Dual Monitor
- Remote search and Local search
- Remote setup and Local setup
- Motion/Sensor/Alarm Event Trigger
- Support E-Map (Same DVR systems UI)
- Support 1024\*768, 1280\*1024 resolution and Full Screen
- Bi-directional Audio communication
  - \*) Two-way Audio / support model
- Support Dual Monitor (E-map, Search etc...)
- Support PC DVR 'V3' series
  - Standalone DVR (SDx series, HDx series) XNET IP product



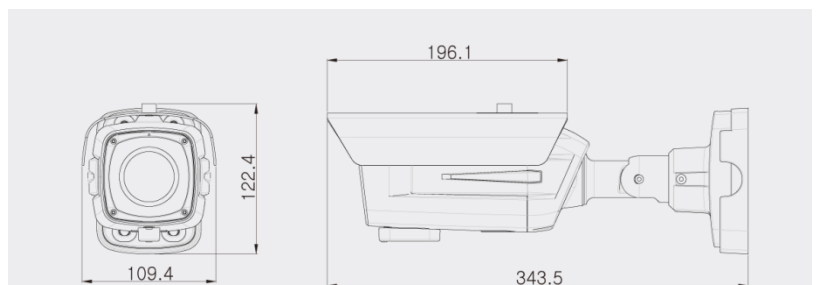
**XNET APP (XNET Alliance Partner Program)**

CNB XNET Products support Open-API for partners. Supplying a dynamic SDK based on API for various IP security environment. Join hands with XNET Alliance Partner Program, you can make a stable and strong IP security environment with improving your CMS and NVR.

**[SDK Package Items]**

- Sample Program and System Library for debug
- Release Mode Sample Method
- Documentation for SDK
- Sample Header File
- Library (debug/release)
- Sample Source Code (by Visual Studio ver. 2005)

**Dimensions**



## Specifications

NXE3055VR		Specifications
Camera	Signal System	Progressive image processing
	Scanning System	16:9 Progressive
	Image Sensor	1/3" Progressive CMOS Sensor
	Sync. System	Internal
	Effective Pixels Number	1920 (H) x 1080 (V) 2.0 Mega
	Horizontal Resolution	1100TVL
	Video Output Level	Select NTSC/PAL 1.0Vp-p (BNC 75Ω, composite)
	Lens	Built-in DC Iris Vari-focal Lens (f=3~10mm, F1.2)
	Day & Night System	TDN(ICR)
	Digital Slow Shutter	On/Off (x4)
	IR LED	IR LED 36 EA (45'/850nm)
	Min. Illumination	0.01Lux (Color) / 0.001 (B/W, DSS On) / 0.0Lux (IR LED On)
	OSD	Control On/Off over IP (Menu, Time/Date)
	Back Light Compensation	On/Off
	Flickerless	On/Off
	White Balance	Auto/Manual/Push
	Exposure	Auto/Manual
	WDR	On/Off
	3D-DNR / 2D-DNR	On/Off (20 Step)
	Privacy Zone	Select 10 Zone – each area
Functions	Color, B/W	
Electronic Shutter Speed	NTSC : 1/30~1/30,000 (12 Step)   PAL : 1/25~1/30,000 (12 Step)	
Video / Audio	Compression	H.264 / MJPEG
	Frame rate	Channel 1 Mode : H.246 * Support 1080P Mode Channel 2 Mode : H.264/MJPEG(30fps) * Support 720P Mode Channel 3 Mode : H.264/MJPEG(30fps) * Support D1 Mode
	Resolution	Full HD(1920 x 1080), SXGA(1280 x 1024), 720P(1280x720), XGA(1024x768), D1(720 x 480 / 720 x 576), VGA(640x480), CIF(352 x 240 / 352 x 288), QVGA(320x240)
	Video Streaming	Channel 1 Mode : H.246(1080P) CBR/VBR Channel 2 Mode : H.264/MJPEG(720P) CBR/VBR Channel 3 Mode : H.264/MJPEG(D1) CBR/VBR
	Max. Upload speed	Constant and variable bit rate in H.264 (up to 64kbps ~ 10Mbps by 10 user client) Controllable frame rate and bandwidth * Upload bandwidth Max. 16Mbps
	Audio	Two-way (full duplex / ADPCM G.711)
Network	Protocol	IPv4, HTTP, TCP, RTSP, RTP, RTCP, UDP, SMTP, FTP, ICMP, DHCP, UPnP, Bonjour, ARP, DNS, DynDNS, NTP, Multicast *) Onvif, IPv6, HTTPS, QoS, SNMP
	Supported DDNS	1. CNB DDNS 2. DynDNS.org 3. Reference code with SDK
	LAN Interface	Ethernet 10/100 Base-T (RJ-45 Type)
Security	Access level setup	Multiple user access levels with password protection
	Network Security	IP Filtering
Alarm and Event Management	Image detection	Motion detection (Select 3 Regions - each area)
	Sensor detection	Sensor In, Scheduling, Alarm out
	Local Storage	SD/SDHC Card Memory : Max. 32GByte (Class 4 or Higher)
	After Event process	JPEG Image upload over FTP server / SMTP (E-mail server)
Pre/Post alarm	Detail time-set : Max. Pre alarm 5sec. / Post alarm 8sec., Storage (SD card : JPEG Image, H.264 Movie file)	
Applications	Browser	Internet Explorer 6.0 or Higher
	Support User Client	Camera Live viewer for up to 10 Clients (by 64Kbps~1Mbps)
	Monitoring Application	Web Viewer (Window Web Browser Base), Video Snapshot to file (JPEG), XNVR, CNB CMS and Utility (IP-Installer, etc)
Maintenance	System Upgrade	Firmware upgrade over HTTP
Mechanical	PoE	Standard IEEE 802.3af supported, End-Span type
	Power	24VAC or 12VDC Dual Voltage / Max. 13W
	Operating Temperature	-20℃ ~ 40℃
	Dimensions	109.4(W) x 122.4(H) x 343.5(D)mm